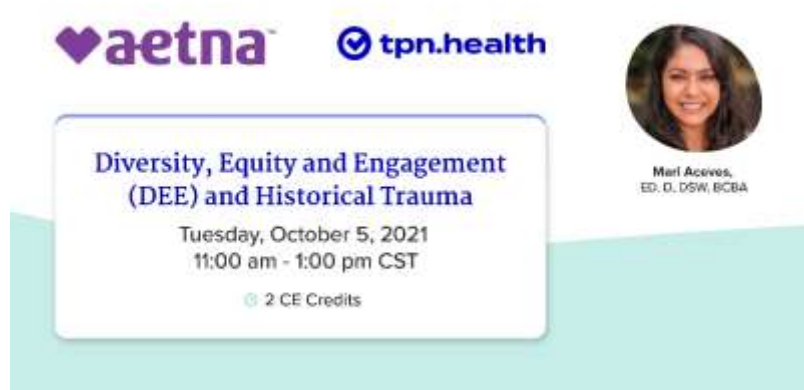


September 2021

In partnership with TPN.health and the National Council for Behavioral Health/Mental Wellbeing, Aetna Better Health of Louisiana invites you to attend **Diversity, Equity and Engagement (DEE) and Historical Trauma**, the third in a series of Trauma-Informed Resiliency Oriented Care webinars.

NOTE: Due to Hurricane Ida, this seminar was **rescheduled** from 9/7/2021 to 10/5/2021.



Diversity, Equity and Engagement (DEE) and Historical Trauma

Presenter: Mari Aceves, Ed. D, DSW, BCBA

Date: 10/5/2021 **Time:** 11:00am – 1:00pm CST **CEs/CEUs:** 2

Registration <https://virtual.tpn.health/events/aetna-diversity-equity-and-engagement-dee-and-historical-trauma-registration/>

As we continue to grapple with the uncertainty of a global pandemic, people across our Nation have taken to the streets and boardrooms to demand change around inequities and their devastating effects. In addition, the media is saturated with stories about the impact on health, wealth and relationships of intergenerational traumatic events. However, for people of color including, but not limited to Black, Indigenous people, these stories in the form of news or social media posts are more than just stories-- they are examples of lived experiences enduring trauma, historically and currently, which have led and will continue to lead to health and other social disparities. Please join us as we explore the historical and contemporary inequities faced by Black, indigenous and other people of color, the impacts these inequities have on those we support, the impact on staff, and the trauma informed, resilience-oriented strategies for how to address these impacts at the individual and community level to build a future that promotes healing and resilience.

By the end of this training, participants will be able to:

1. Define intergenerational trauma and complex trauma.
2. Describe the impacts trauma has on individuals, communities, staff, and organizations.
3. Explain three trauma-informed, resilience-oriented strategies to address the impacts.

CE Clock Hours and CEUs Approved for this Webinar

Provider Type	Details
Counselors	<p>This program has been approved for 2.0 CE clock hours by the Louisiana Counseling Association as authorized by the Louisiana Professional Counselor Licensing Board of Examiners.</p> <p>Trusted Provider Network, LLC is recognized by the New York State Education Department's State Board for Mental Health Practitioners as an approved provider of continuing education for licensed mental health counselors. #MHC-0220.</p>
Addiction Counselors	<p>This course has been approved by TPN.health, as a NAADAC Approved Education Provider, for educational credits. NAADAC Provider #198061, TPN.health is responsible for all aspects of the programing. Counselor Skill Group: Counseling Services.</p>
Psychologists	<p>Amedco LLC designates this activity for a maximum of 2 psychologist contact hours.</p>
Physicians	<p>Amedco LLC designates this live activity / enduring material for a maximum of 2 AMA PRA Category 1 Credits. Physicians should claim only the credit commensurate with the extent of their participation in the activity.</p>
Social Workers	<p>TPN.health, #1766, is approved to offer social work continuing education by the Association of Social Work Boards (ASWB) Approved Continuing Education (ACE) program. Organizations, not individual courses, are approved as ACE providers. State and provincial regulatory boards have the final authority to determine whether an individual course may be accepted for continuing education credit. TPN.health maintains responsibility for this course. ACE provider approval period: 03/31/2021 – 03/31/2022. Social workers completing this course receive 2 General continuing education credits. ASWB ACE credit is not available in NY and NJ.</p> <p>Trusted Provider Network, LLC is recognized by the New York State Education Department's State Board for Social Work as an approved provider of continuing education for licensed social workers #SW-0654.</p>
Licensed Marriage and Family Therapists	<p>Trusted Provider Network, LLC is recognized by the New York State Education Department's State Board for Mental Health Practitioners as an approved provider of continuing education for licensed marriage and family therapists #MFT-0097.</p>

More about the Trauma-Informed Resiliency Oriented Care Webinar Series

In partnership with TPN.health, Aetna Better Health of Louisiana is hosting this free webinar series, which is aimed at all staff, all providers, all tribal connections, peer support specialists, and others who wish to learn more about Trauma-Informed Care (TIC).

Each webinar:

- includes presenters from Aetna and the National Council for Behavioral Health/Mental Wellbeing.
- is 2 hours in length with an attendance capacity up to 1,000 participants.
- is interactive; participants should be prepared with both video and audio capabilities.
- is approved for **2.0 hours of continuing education (CEs)**

Don't forget to mark your calendar for these upcoming webinars and follow-up discussions!

10/05 Diversity, Equity, and Engagement (DEE) and Historical Trauma

10/19 The First 1000 Days: Maternal Mental Health and Substance Misuse Considerations

10/26 The First 1000 Days: Maternal Mental Health and Substance Misuse Considerations
Follow Up Discussion

Questions and Support:

For questions, please contact LAProvider@AETNA.com or call 1-855-242-0802 and follow the prompts.